

Search MNR Sites

MNR Sites

Location: [MNR Home](#) > [Ontario's Living Legacy](#) > [Crown Land Use Atlas](#) > [QUEEN ELIZABETH II WILDLANDS PROVINCIAL PARK \(P34\)](#)

QUEEN ELIZABETH II WILDLANDS PROVINCIAL PARK (P34)

FACT SHEET

NOVEMBER, 2002

Background

On July 16, 1999, the Ontario Government released the Ontario's Living Legacy Land Use Strategy to guide the planning and management of Crown lands in central and parts of northern Ontario. A major part of the Ontario's Living Legacy Land Use Strategy was a government intent to establish 378 new protected areas. This commitment marks the biggest expansion of provincial parks and conservation reserves in Ontario's history. Queen Elizabeth II Wildlands Provincial Park is part of this significant expansion of Ontario's protected areas system. Following public and Aboriginal consultation in autumn of 2000 on refining the boundary of this protected area, Section 2 of Regulation 951 of the Revised Regulations of Ontario, 1990, Provincial Parks Act, was amended on May 8, 2002 by Ontario Regulation 147/02, to formally establish this Provincial Park. The park was formally regulated as Dalton Digby Wildlands Provincial Park. That name had been taken from two of the five townships in which the park is located, but had no other particular significance. The Government of Ontario has announced its intent on October 10, 2002 to rename this park Queen Elizabeth II Wildlands Provincial Park to honour Her Majesty's Golden Jubilee.

Size and Location

Queen Elizabeth II Wildlands Provincial Park is 33,505 hectares of Crown land. It is found in the western portion of Haliburton County, the Townships of Anson and Lutterworth; the northern portion of The City of Kawartha Lakes, in Dalton and Digby Townships, as well as the southern part of Ryde Township in the District Municipality of Muskoka. Private lands within or adjacent to this area are not included within this provincial park.

Area Highlights

Queen Elizabeth II Wildlands is the most diverse and least disturbed natural area in ecological site district 5E-8. Containing more than 50 landform vegetation patterns, the site has had limited or no recent history of logging. The site consists mostly low rolling topography, including organic soils, flat sandy deposits, and bare bedrock uplands with shallow soil patches. A large number of areas have been documented as being biologically significant within Queen Elizabeth II Wildlands, including Sadowa Wetlands, the Dalton Black Ash Stand, and the provincially significant Lewisham Wetland and Riley Lake Barrens - both Muskoka Heritage

Areas. This area contains numerous extensive recreational values including the 'wilderness' portion of the Ganaraska Hiking Trail which travels through the northern region of Queen Elizabeth II Wildlands. Additionally, numerous other trails traverse this area. Remote fishing, canoeing, snowmobiling, backcountry travel, and hunting are popular activities throughout this Crown land area.

Land Use Intent

Provincial parks are areas of Crown land set aside by regulation under the Provincial Parks Act. The OLL Land Use Strategy establishes the Ministry's intent to manage this park as a natural environment class provincial park. Provincial parks protect Ontario's representative natural areas and special landscapes. Most recreational activities (e.g., hiking, skiing, tourism related uses, nature appreciation) that have traditionally been enjoyed in the area will continue, provided that these uses do not impact the natural features needing protection. Natural environment parks incorporate outstanding recreational landscapes with representative natural and historical features to provide high quality recreational and educational experiences. Visitors to these parks will enjoy spectacular landscapes along with interesting natural and historical features, as well as a variety of things to do such as canoeing, swimming, and camping. Natural environment parks often contain developed recreation facilities, but their rich and varied environments are the main reason for their establishment. Activities permitted in this classification of park range from backcountry travel and camping to car camping, hunting, fishing, boating, hiking, picnicking, biking and swimming. Consistent with the Ontario's Living Legacy Land Use Strategy, hunting, fishing and fur harvesting will be permitted within this provincial park addition. Commercial timber harvesting, mining, aggregate extraction and commercial hydroelectric development are prohibited in provincial parks. New private access roads and new resource access roads are not permitted in provincial parks unless a prior written commitment has been made, with the exception of necessary access to existing mining claims, leases and patents enclosed by the provincial park. Where there are existing Aboriginal and treaty rights, the establishment of this provincial park does not extinguish these rights.

Next Steps

In the future Ontario Parks will undertake a park management plan to determine the long-term management of this area. The public will be invited to participate in the preparation of management plans. Please let us know if you would like to be notified directly of this opportunity. Alternatively, an interim management statement may be prepared to document the known values and uses of the area, and to provide custodial policies for managing the area until a detailed park management plan is prepared. Planning, management and the uses permitted within this park will be consistent with the commitments of the Ontario's Living Legacy Land Use Strategy and Ontario Provincial Parks Planning and Management Policies (1992).

For More Information

For further information on Queen Elizabeth II Wildlands Provincial Park, please contact: Hank van Luit, Ontario Parks, Central Zone, Ministry of Natural Resources, 451 Arrowhead Park Road Huntsville, Ontario, P1H 2J4 phone (705) 789-1481, fax (705) 789-5948. For More Information about Ontario's Living Legacy, visit the Ministry of Natural Resources Internet website www.mnr.gov.on.ca/MNR/oll/.

[[MEDIA CENTRE](#) | [PUBLICATIONS](#) | [MNR OFFICES](#) | [TELEPHONE DIRECTORY](#)]

[Central Site](#) | [Feedback](#) | [Search](#) | [Site Map](#) | [Français](#) | [Program](#) | [Topic](#) | [Location](#) | [Service](#)]



This site is maintained by the Government of Ontario, Canada.

This Web Site has been created as a public service by the Ministry of Natural Resources of the Government of Ontario. Every reasonable effort has been made to ensure the currency and accuracy of the information presented at the Site. However, the Government of Ontario assumes no responsibility and Users of this Site should verify the information from other sources prior to making decisions or acting upon it.

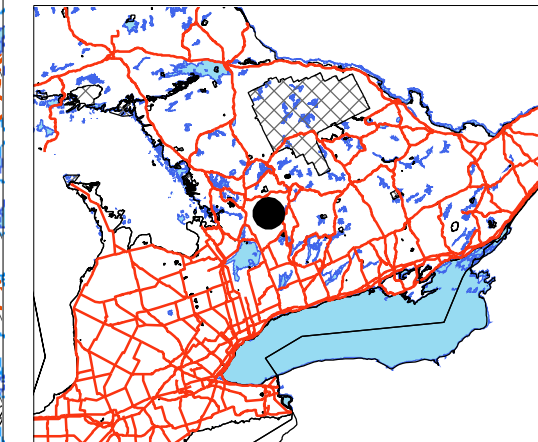
Modified 6-1-2003 © [Queen's Printer for Ontario, 2003](#)

Copy for archive purposes. Please consult original publisher for current version.
Copie à des fins d'archivage. Veuillez consulter l'éditeur original pour la version actuelle.

DALTON DIGBY WILDLANDS
Provincial Park
(Natural Environment Class)

-  DALTON DIGBY WILDLANDS
-  Forest Reserves
-  Other Proposed OLL Conservation Reserves
-  Existing Protected Areas
-  Indian Reserve
-  Lakes
-  Streams
-  Lot Lines
-  Townships
-  Roads
-  Railroad Tracks
-  Utility Lines

Locator Map



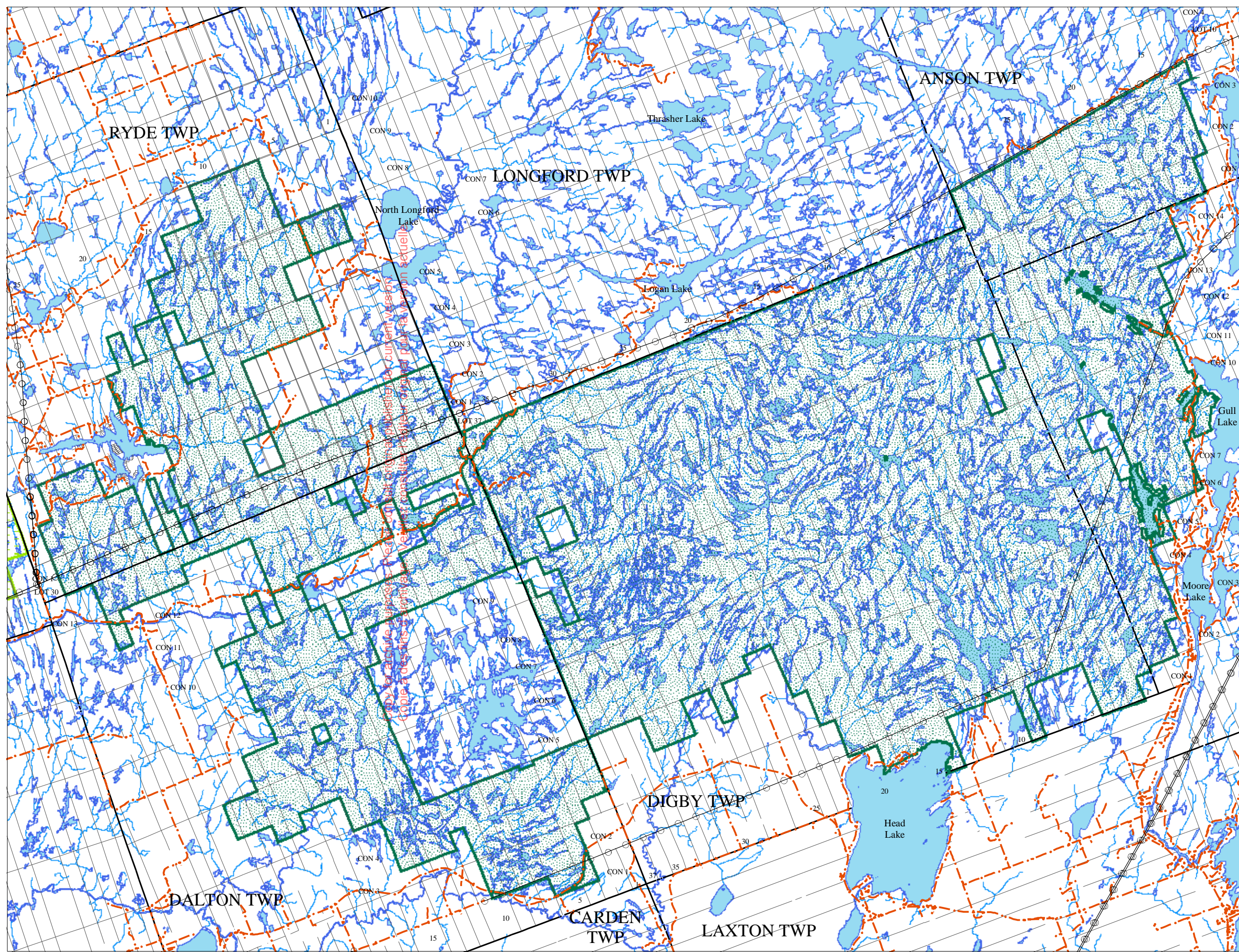
This map is illustrative only. Do not rely on it as being a precise indicator of routes, locations of features, nor as a guide to navigation.

This map is not a legal survey. For a more precise description of the boundaries of this Provincial Park, refer to the plan known as P34, Dalton Digby Wildlands, filed on the 8th day of May, 2002 in the Office of the Surveyor General, Ministry of Natural Resources.

Published June 2002

Basedata Source:
 Bancroft and Parry Sound
 NRVIS Database, 2000

Scale 1:170000



Copy for archival purposes. Please do not disseminate for current use only.
 Copie à des fins d'archives. Veuillez consulter l'original pour la version actuelle.